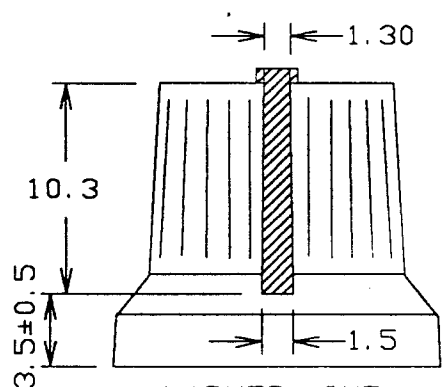
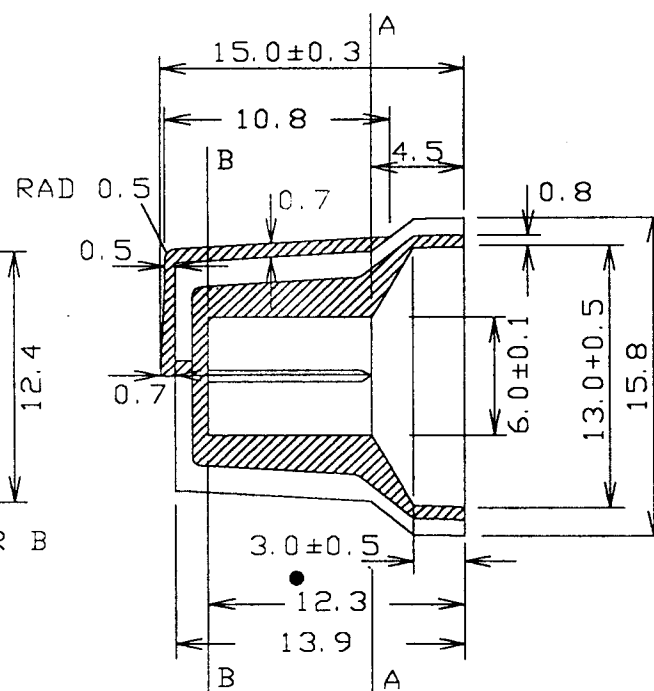
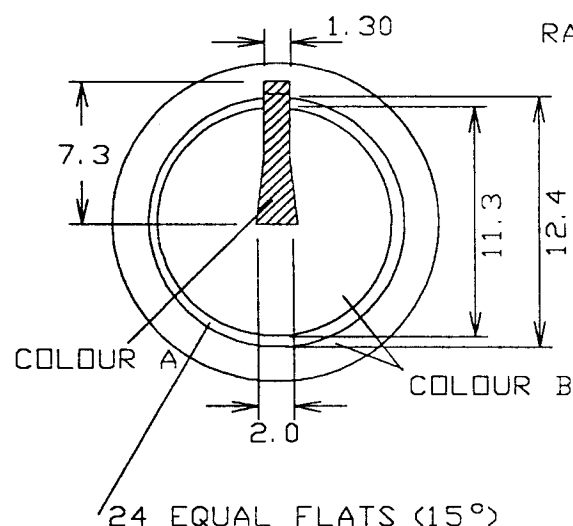


ISS.	AMEND	DATE
1	1st DRAWN	4/10/93
2	TOLS ADDED	2/11/93
3	PEAK NOTE ADD	10/6/94
4	AMEND TO PRODN	28/3/95
5	STD POSN NOTE	5/5/95
6	SHAFT DRWG No.	25/6/96
7	●NOTE ADDED	17/12/97

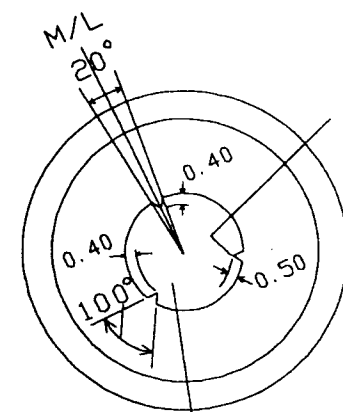


MARKER LINE  
POSITION  
LOCATED CENTRALLY  
IN A FLAT



3 EQUI DISTANCE  
SPLINES TO MATCH  
FLATS

6mm SPLINE SHAFT  
CORES TO BE LOCKABLE  
IN 2 POSNS @ 90°  
TO LOCATE TO PEAK AND  
(10°) DIFFERENCE



INTERCHANGABLE  
CORES SEE SHAFT  
LOCATION DRWG  
CL170810P2  
FOR OTHER SHAFT  
HOLE DETAILS

STD POSN SHOWN

TIP OF PEAKS 'A'  
TO RUN OUT FROM MEAN  
DIA AT A-A WITH 1/4°  
DRAFT BACK TO B-B

●NOTE SHAFT HOLE DEPTH  
OF 6mm SPL SHAFT  
VERSION IS 11.8mm NOT  
12.8mm AS FOR OTHER  
MODELS.

Tolerance	
NO DEC. PLACE ±	
1 DEC. PLACE ±	0.2
2 DEC. PLACE ±	0.05
DIA. HOLES ±	
ANGLES ±	1/2°
UNLESS	
OTHERWISE STATED	

WHERE USED F.R.

SCALE N.T.S.

'R' VERSION HAS TPE OUTER MOULDING.

DIMENSIONS IN MILLIMETERS UNLESS OTHERWISE STATED. WORK TO DIMENSIONS. DO NOT SCALE DRAWING. 3rd ANGLE PROJECTION. REMOVE BURRS. IF IN DOUBT ASK.

Cliff Electronic Components, Inc. 4876 East Second Street, Benicia, CA 94510 USA Tel: (707) 746 8090 Fax: (707) 746 8092		MATERIAL PP / PP OR PP / TPE FINISH LIGHT SPARK DRAWN C.A.M.J. APPD. RWT		TITLE KNOB K87MB / K87MBR DRWG. No. CL 170840		FORM: A4DRWGH
--	--	--	--	--	--	---------------